

FileDesk 1.01 for Windows 3.x



User Reference Guide

Copyright © 1993 Thierry André & Marc Pélissier
All Rights Reserved

1. General Information

Windows FileDesk is a program to help you manage visually your files and directories.

Features include:

- * Automatic icon association for various file type (Spreadsheet, wordprocessor, graphic, sound, ...)
- * Easy move or copy action using the mouse
- * Ability to run a program by double-clicking its icon.
- * Unique recursive directories information
- * Toolbar for quick command and easy movement in the directories tree

To use Windows FileDesk you must have MS-Windows 3.0 or greater and you must run Windows in Standard or Enhanced Mode. Windows FileDesk will not operate in Real Mode.

2. Money Stuff

Windows FileDesk is *not free*. It is a Shareware product. You are allowed to evaluate this product for 30 days. After that time you *must* register or discontinue using the program. The use of unregistered copies of Windows FileDesk, beyond the evaluation period, by any person, business, corporation, government agency or any other entity is strictly prohibited. The basic registration fee for Windows FileDesk is 95 French Francs (~\$18). Inexpensive upgrades for new version of Windows FileDesk will be available in the near future for registered users. For instructions on how to register, see the file REGISTER.WRI or REGISTER.TXT.

Whether or not you choose to register, we'd enjoy hearing your comments on this program. Please send all suggestions, gripes, bug reports and anything else to any of these addresses:

Thierry André
7 rue abbé de l'épée
75005 PARIS
FRANCE

Marc Pélissier
20 rue d'Estienne d'Orves
92130 Issy les Moulineaux
FRANCE

tel: (1) 41 08 90 28 (Voice only)

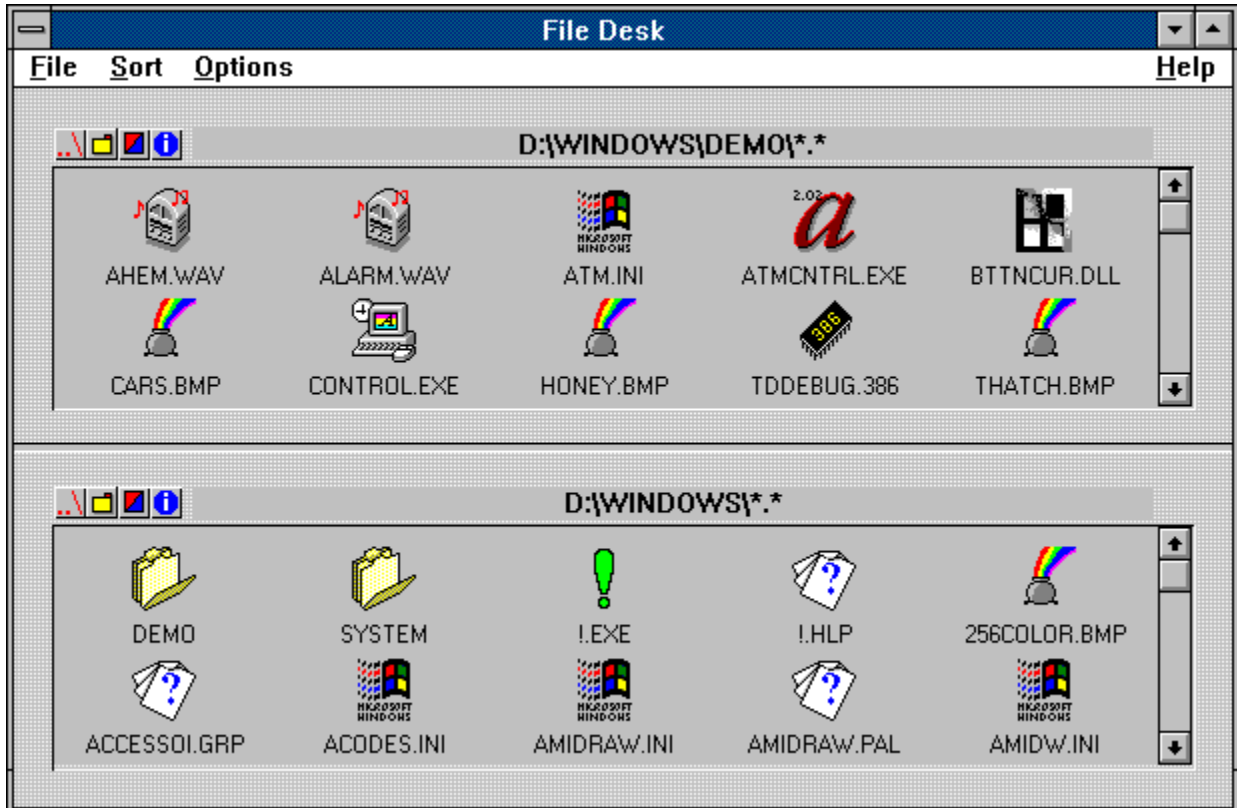
3. Legal Stuff:

No guarantee is made, expressed or implied, pertaining to the use, misuse, or any problems caused by this program. Should the program prove defective, the purchaser or evaluator assumes the risk of paying the entire cost of all necessary servicing, repair, or correction, and any incidental or consequential damages. In no event will the author be liable for any damages whatsoever arising out of the use or the inability to use this product.

A limited license is granted to copy and distribute Windows FileDesk for the evaluation use of others, as long as it is distributed without modification, complete with all files. No fee, charge or other compensation may be requested with these exceptions: Operators of electronic bulletin board systems may make Windows FileDesk available for downloading, so long as there is no specific charge for the download of Windows FileDesk. Vendors of user-supported or shareware software may distribute Windows FileDesk, so long as any duplication and handling fees do not exceed 40 French Francs (~ \$8), and notice is clearly given that such fees do not grant the evaluator a license to use Windows FileDesk beyond the evaluation period.

4. First step with FileDESK

FileDesk has two main components: the filer windows. These are the windows used to display the contents of selected directories. The following scheme illustrates this description.



Each filer window will display the files and sub-directories that can be found in the current directory. The name of the current directory is recalled in the caption of the filer window.

Sub-directories are represented as yellow folders (like DEMO and SYSTEM in the preceding example).

Depending on their type each files will have a particular icon (note the .BMP, .INI, .WAV icons for example in the upper example), the executable files will be represented by the program's regular icon.

And last but not least, the toolbar in the upper left corner of a filer window is made of four buttons.



One click will allow you to go back one step in the directories structure.



One click will prompt you for the name of a new folder (directory) to create.



One click will prompt you for the new name of a the file that you want to rename. (files to be renamed must be selected)



One click will give you the full information for a file or sub-directories. You will obtain the complete size of the selected object or set of object including the size of any subdirectories (files to be renamed must be selected).

5. How to use FileDESK

5.1 Selecting Objects

To select an object (file or folder) just click on it once and a 3D border will appear around it. For multiple selection hold the shift key while selecting objects with the mouse.

A single click on a folder will select it, a double click will open it and display its contents in the current filer window.

5.2 Copying Objects

To copy an object or a set of selected objects from a directory to another, first select the source directory with one of the filer windows by using the toolbar or double-clicking on folders. Then select the destination directory by the same manner in the other filer window. Finally, click and hold down the left mouse button in the source directory window and drag it to the destination directory window. While you hold the mouse button and drag the mouse, the cursor will change to a square with the word COPY inside indicating that a copy is in progress. By releasing the mouse button, the copy will be performed.

5.3 Moving Objects

To move an object or a set of selected objects from a directory to another, first select the source directory with one of the filer windows by using the toolbar or double-clicking on folders. Then select the destination directory by the same manner in the other filer window. Finally, click and hold down the right mouse button in the source directory window and drag it to the destination directory window. While you hold the mouse button and drag the mouse, the cursor will change to a square with the word MOVE inside indicating that a move action is in progress. By releasing the mouse button, the move action will be performed.

5.4 Deleting Objects

To delete a file, a directory or a set of object from a directory, select the file, the directory or the set as seen in 5.1 and press the Del key or use DELETE in the FILE menu.

5.5 Launching applications

To execute a program double-click its icon with the left mouse button. If you would like to pass some arguments to the program, double-click with the right mouse button. You will be prompt for arguments. Double-clicking a non executable file will display a dialog asking you if you want to view the file with NOTEPAD.EXE (Notepad.exe MUST be in the windows directory to make it work).

5.6 Options

The SORT menu will allow you to select in which order the objects are displayed in the filer windows. You can sort files by NAME, TYPE or SIZE.

The OPTIONS menu allow you to specify if you want a confirmation dialog for the copy and/or move action.

All these options can be saved using the SAVE CONFIG choice in the OPTIONS menu. This command also save the paths displayed in the filer windows. These paths will be use at launch time.

5.7 Short cuts

F1	Help
ALT + I	Information on selected object(s)
ALT + R	Rename selected file(s)
DEL	Delete selected object(s)